


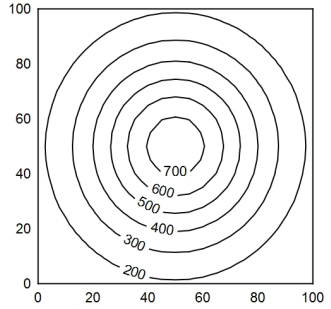
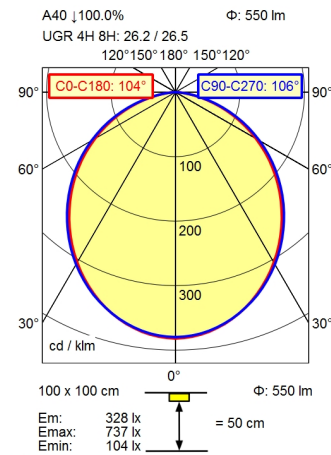


-  CEE 7/XVI
-  BS 1363
-  NEMA 1-15P



Height (m)	Beam Diameter (m)	Light Intensity (lx)
0.25	0.64   0.67	3362 lx
0.50	1.28 m   1.33 m	840 lx
0.75	1.92 m   2.00 m	374 lx
1.00	2.56 m   2.66 m	210 lx

- light source**
- work equipment**
- connected load**
- power consumption**
- luminous flux**
- luminous efficiency**
- light type/-color**
- colour temperatur**
- color rendering index**
- light distribution**
- direct ratio**
- beam angle**
- chromaticity tolerance LED**
- luminance (L65)**
- unified glare rating (4H 8H)**
- system of protection**
- class of protection**
- technology**
- operation**
- housing**
- cover**
- arm**
- dimming Range**
- weight (net)**
- mains lead**
- fastening**
- decorative contrast side parts**

- LED
- electronic transformer
- 100-240 V, 50/60 Hz; secondary 24 V, DC
- env. 14 W
- approx. 550 lm
- approx. 46 lm/W
- D50 standard light; cold white
- approx. 5.000 K
- CRI > 95; R9 > 85
- direct
- approx. 100 %
- 110°
- < 3 SDCM
- <= 23000 cd/m<sup>2</sup>
- <= 28
- IP 20
- II with plug-in power supply, III without plug-in power supply
- Touch DIM
- multi-function switch
- aluminium coloured anodised
- milky; plastic
- silver metallic
- 25-100%
- ca. 2,3 kg
- ca. 3,00 m; mains plug; CEE 7/XVI; BS 1363; NEMA 1-15P
- table base
- black

Arm-mounted luminaire TANE0  
TND 700/D50/D  
113734000-00810077

