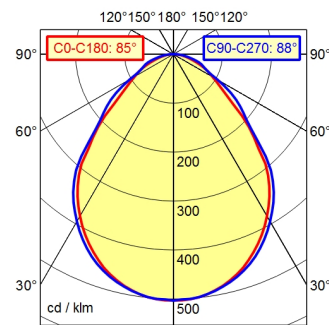
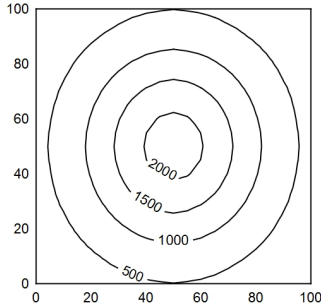


A50 ↓ 100.0% Φ: 1250 lm



100 x 100 cm Φ: 1250 lm
 Em: 892 lx
 Emax: 2140 lx
 Emin: 196 lx
 = 50 cm



light source
work equipment
connected load
power consumption
luminous flux
luminous efficiency
light type/-color
colour temperatur
color rendering index
light distribution
direct ratio
beam angle
chromaticity tolerance LED
glare control
luminance (L65)
unified glare rating (4H 8H)
system of protection
class of protection
technology
operation
housing
cover
arm
balance of articulation joints
weight (net)
mains lead
fastening

LED
 electronic plug-in ballast
 100-240 V, 50/60 Hz
 env. 16 W
 approx. 1.250 lm
 approx. 78 lm/W
 cold white
 approx. 5.000 K
 CRI > 80
 direct
 approx. 100 %
 85
 < 5 SDCM
 structured screen
 <= 16000 cd/m²
 <= 25
 IP 20
 II with plug-in power supply, III without plug-in power supply
 Touch DIM
 multi-function switch
 untreated; dusty grey
 structured; plastic
 tubular aluminium section; anodized; aluminium coloured anodised
 spring
 ca. 1,9 kg
 ca. 3,20 m; mains plug: CEE 7/XVI; BS 1363 A; NEMA 1-15P
 tap16; table clamp (accessory); wall bracket (accessory); screw-down flange