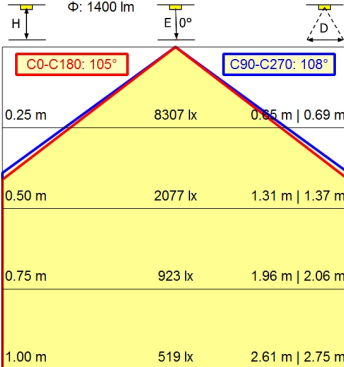
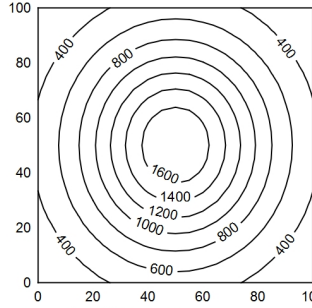


100 x 100 cm  $\Phi$ : 1400 lm  
 Em: 819 lx  
 Emax: 1743 lx  
 Emin: 273 lx  
 = 50 cm



**light source**  
**work equipment**  
**connected load**  
**power consumption**  
**luminous flux**  
**luminous efficiency**  
**light type/-color**  
**colour temperatur**  
**color rendering index**  
**light distribution**  
**direct ratio**  
**beam angle**  
**chromaticity tolerance LED**  
**luminance (L65)**  
**unified glare rating (4H 8H)**  
**system of protection**  
**class of protection**  
**technology**  
**operation**  
**housing**  
**cover**  
**weight (net)**  
**mains lead**  
**design**  
**fastening**  
**special features**

LED  
 electronic transformer  
 100-240 V, 50/60 Hz; secondary 24 V, DC  
 env. 23 W  
 approx. 1.400 lm  
 approx. 74 lm/W  
 cold white  
 approx. 4.000 K  
 CRI > 90; R9 > 50  
 direct  
 approx. 100 %  
 110°  
 < 3 SDCM  
 <= 23000 cd/m<sup>2</sup>  
 <= 28  
 IP 20  
 I with plug-in power supply; III without plug-in  
 power supply  
 continuously dimmable; Touch DIM  
 multi-function switch  
 sectional aluminium; anodised; aluminium  
 coloured anodised  
 Polycarbonate (PC)  
 ca. 1,4 kg  
 ca. 4,70 m; mains plug: CEE 7/VII  
 mounted version  
 screw-down bracket, horizontal  
 fixed connection

