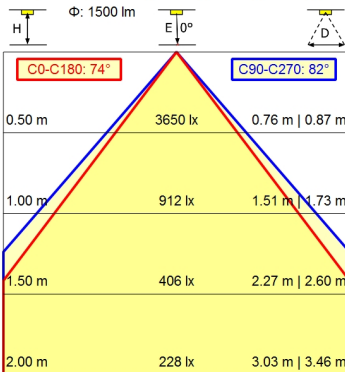
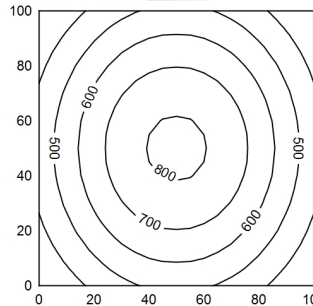
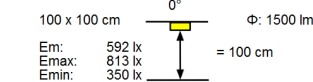
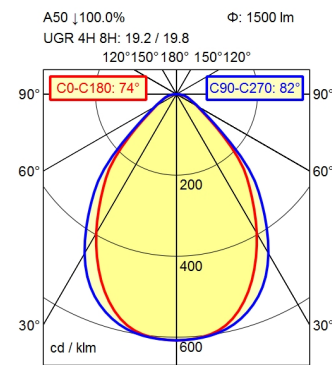


GST 18i3F REV



- light source
- work equipment
- connected load
- power consumption
- luminous flux
- luminous efficiency
- light type/-color
- colour temperatur
- color rendering index
- light distribution
- direct ratio
- beam angle
- chromaticity tolerance LED
- glare control
- luminance (L65)
- unified glare rating (4H 8H)
- system of protection
- class of protection
- technology
- operation
- housing
- cover
- dimming Range
- weight (net)
- mains lead
- design
- fastening
- decorative contrast side parts
- special features

- LED
- electronic ballast dimable digital
- 220-240V, 50/60Hz
- env. 23 W
- approx. 1.500 lm
- approx. 65 lm/W
- adjustable white
- approx. 3.000 - 6.500 K
- CRI > 90; R9 > 50
- direct; symmetric
- approx. 100 %
- 75°
- < 3 SDCM
- conical prismatic screen
- <= 3800 cd/m²
- <= 22
- IP 20
- I
- continuously dimmable; radio-controlled; no notice
- external
- aluminium/plastic; anodised; aluminium coloured
- anodised
- structured; plastic
- 0,1-100%
- ca. 3,4 kg
- built-in plug; connection box; GST 18i3F REV
- mounted version
- screw down lash
- black
- through-wired

Workplace-system luminaire Tameto SAHQ 44 RDC

114263000-00805771

