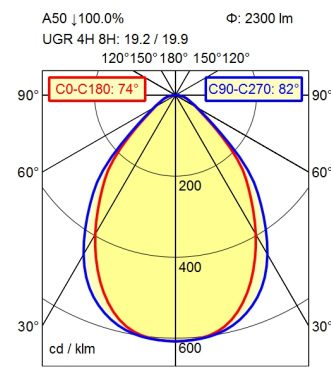
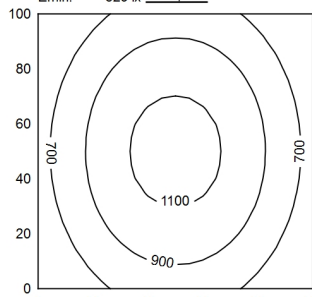


2-polig

1-polig



100 x 100 cm Φ : 2300 lm
Em: 863 lx
Emax: 1163 lx
Emin: 529 lx



Φ : 2300 lm
E | 0°
H | D

Height (m)	Beam Diameter (m)	Light Intensity (lx)
0.50 m	0.76 m 0.87 m	5596 lx
1.00 m	1.51 m 1.73 m	1399 lx
1.50 m	2.27 m 2.60 m	622 lx
2.00 m	3.03 m 3.46 m	350 lx

- light source
- work equipment
- connected load
- power consumption
- luminous flux
- luminous efficiency
- light type/-color
- colour temperatur
- color rendering index
- light distribution
- direct ratio
- beam angle
- chromaticity tolerance LED
- glare control
- luminance (L65)
- unified glare rating (4H 8H)
- system of protection
- class of protection
- technology
- operation
- housing
- cover
- weight (net)
- mains lead
- design
- fastening
- decorative contrast side parts

- LED
- electronic ballast dimable digital
- 220-240V, 50/60Hz
- env. 32 W
- approx. 2.300 lm
- approx. 72 lm/W
- adjustable white
- approx. 3.000 - 6.500 K
- CRI > 90; R9 > 50
- direct
- approx. 100 %
- 75°
- < 3 SDCM
- conical prismatic screen
- <= 3800 cd/m²
- <= 22
- IP 20
- I
- continuously dimmable; radio-controlled; no notice external
- aluminium/plastic; anodised; aluminium coloured anodised structured; plastic
- ca. 4,3 kg
- ca. 0,08 m; connector; 2-polig; 1-polig
- mounted version
- extension range of rise-and-fall pendant 0.3 - 1.3 m
- black

Workplace-system luminaire Tameto SAHZQ 66 RC

114266000-00805794

