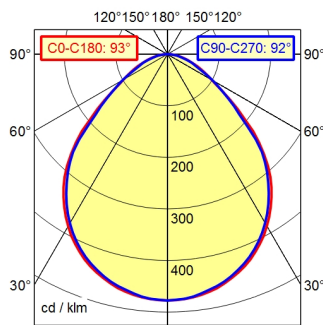


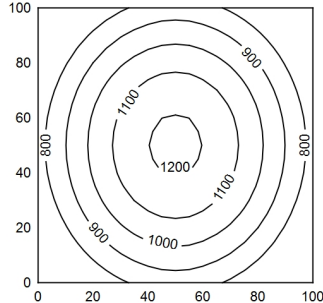
GST 1813F REV

A50 ↓ 100.0% Φ: 3000 lm



100 x 100 cm Φ: 3000 lm

Em: 939 lx
Emax: 1213 lx
Emin: 634 lx



light source
work equipment
connected load
power consumption
luminous flux
luminous efficiency
light type/-color
colour temperatur
color rendering index
light distribution
direct ratio
beam angle
glare control
luminance (L65)
unified glare rating (4H 8H)
system of protection
class of protection
technology
operation
housing
cover
weight (net)
mains lead
design
fastening
dimension
decorative contrast side parts
special features

LED
power supply unit
220-240V, 50/60Hz
env. 35 W
approx. 3.000 lm
approx. 86 lm/W
cold white
approx. 5.000 K
CRI > 80
direct
approx. 100 %
92°
structured screen
≤ 13000 cd/m²
≤ 25
IP 20
I
switchable; no notice
rocker switch
aluminium/plastic; anodised; aluminium coloured
anodised
structured
ca. 3,2 kg
built-in plug; GST 1813F REV
mounted version
screw down lash
A=899 mm
dusty grey
through-wired