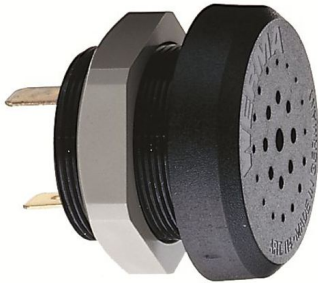


Electronic Audible Signal Devices / Electronic Buzzers Installation 114
Electr. Buzzer EM Contin. tone 230VAC BK



Part No.: 114.068.28



MECHANICAL DATA

Height	43 mm
Diameter	43 mm
Materials	PC/ABS
Housing colour	Black
Protection category	IP30
Connection	Flat plug
Type of fixing	Built-in mounting
Working temperature minimum	-20°C
Working temperature maximum	+60°C
Weight with packaging	46 g
Product weight	33 g

ELECTRICAL DATA

Operating voltage	230V
Operating voltage type	AC
Operating voltage frequency	50Hz
Operating voltage tolerance	+/- 10%
Rated operational voltage	230 VAC
Rated operational current	20 mA
Rated inrush current	500 mA
Protection class	Protection class 2
Pollution degree	2
Overvoltage category	II
Isolation voltage	U _i = 250V; U _{imp} = 2.500V

ACUSTICAL DATA

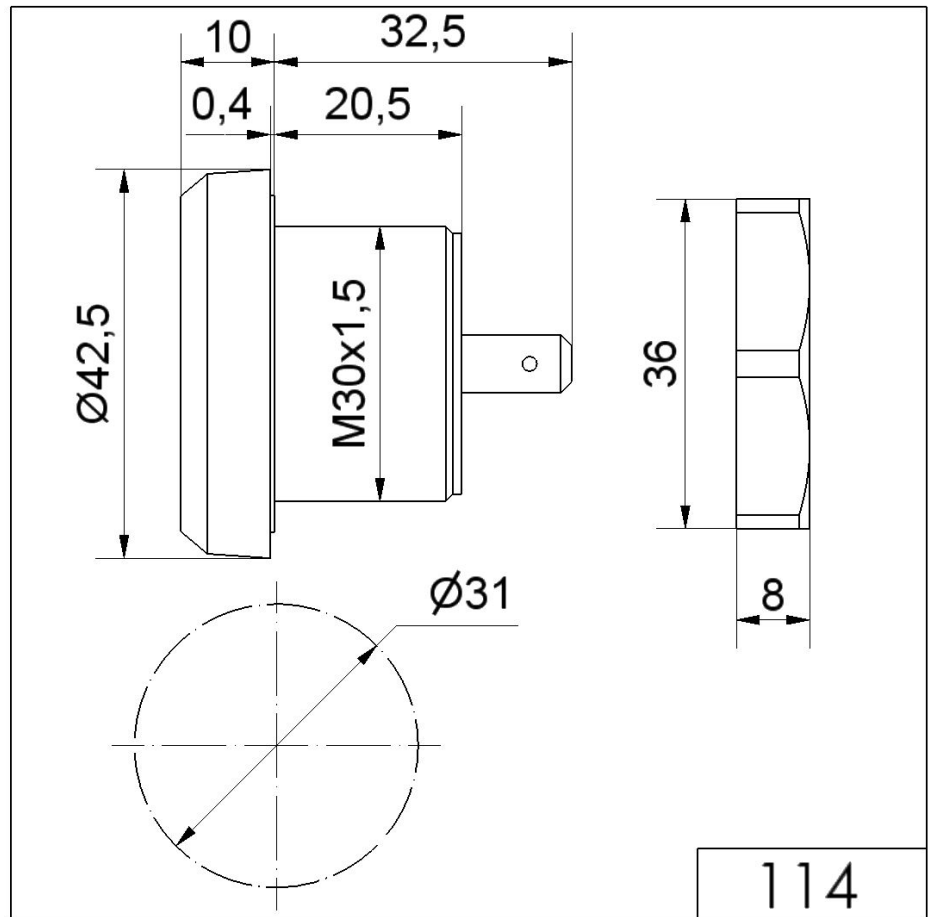
Volume/dB(max) at 1m distance	85,0 dB (A)
Acoustic signal image	Continuous tone
Audio frequency	2400 Hz
Acoustic service life	5,000 h minimum



For additional installation and mounting information, refer to the appropriate user guide at www.werma.com. This printed copy is for information only and is subject to alteration.

Electronic Audible Signal Devices / Electronic Buzzers Installation 114
Electr. Buzzer EM Contin. tone 230VAC BK

DRAWING



For additional installation and mounting information, refer to the appropriate user guide at www.werma.com. This printed copy is for information only and is subject to alteration.