

Series AVC1500

For longer lengths of cable.

AVC1500 Series

- Standard direct crank. Permanently attached.
- Manual rewind models, spring actuated pin lock, cam-lock drag brake.
- Equipped with one durable rubber twist tie for cable ends. Divider disc models equipped with additional tie.
- Non-reflective black matte finish is standard.

Options:

- Heavy duty locking caster wheel set, includes 2 locking and 2 non-locking casters with mounting plates (Part No. 9949.0075).
- Frame-mounted carrying handles (Part No. 9955.0023).
- Divider discs, available with a cut-out.

Note: This disc location must be specified.



AVC1500
Standard configuration shown



AVC1520-17-18
Options shown:
• Slotted divider disc
• Heavy-duty casters
• Carrying handles
• Caster extension brackets (see Note 3)



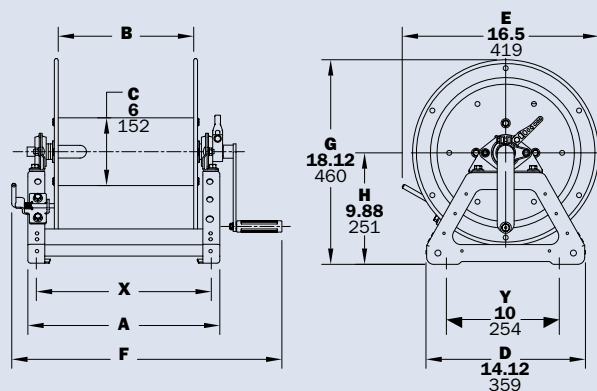
AVC 1500 Series includes one durable rubber twist tie for cable ends. Divider disc models with two.
Part No. 9949.0082

PARTS DRAWING – ISO 218

Model Number See Note 3	Cable Capacity of Reel feet m									Approx. Weight without cable lb. kg			Reel Dimensions in. mm			
	O.D. (in) O.D. (mm)	.25 6	.32 8	.38 10	.41 10	.45 11	.49 12	.58 15	.67 17	NET	UPS/ FedEx. SHIP Wt.	Freight SHIP Wt.	A	B	F	X
AVC1514-17-18		1250 381	700 213	550 168	400 122	325 99	300 91	200 61	125 38	23 10	68* 31	35 16	11 279	6 152	18 457	9.5 241
AVC1516-17-18		1700 518	1000 305	700 213	600 183	500 152	400 122	300 91	200 61	24 11	68* 31	36 16	13 330	8 203	20 508	11.5 292
AVC1520-17-18		2500 769	1450 442	1100 335	950 290	775 236	625 191	475 145	300 91	25 11	80* 36	40 18	17 432	12 305	24 610	15.5 394
AVC1522-17-18		3000 914	1700 518	1250 381	1050 320	875 267	700 213	525 160	350 107	26 12	98* 44	46 21	19 403	14 356	26 660	17.5 445

Notes:

1. Specifications subject to change.
 2. **Be sure to check dimensions and weights prior to ordering.**
 3. For AVC 1520-17-18 and AVC 1522-17-18 with caster extension brackets, dimension D=20," dimension G=22."
- *Dimensional weight applies when shipped as a parcel package (via FedEx or UPS Ground).



AVC1500 Serie